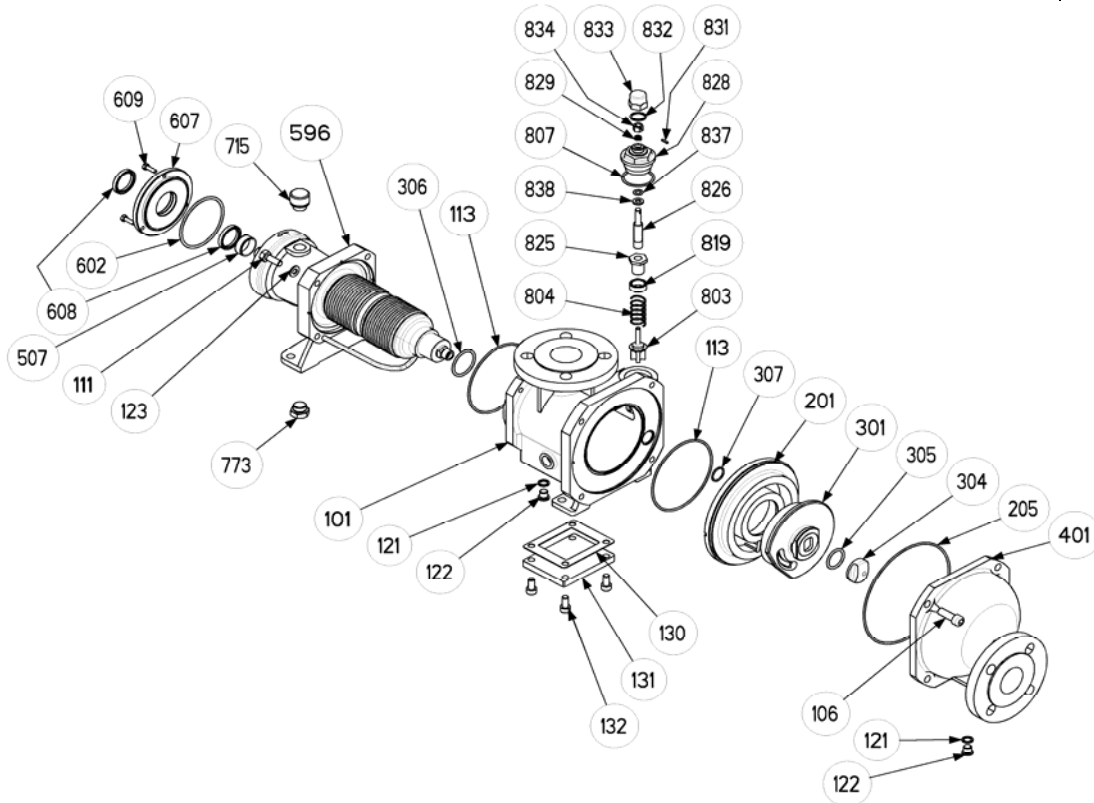


Section Effective Replaces	1001 June 2010 April 2010
----------------------------	---------------------------------

(See Instructions 1001-E00 for Installation, Operation and Maintenance)



Reference			Description	Quantity		Article code		Wear parts
Ass.	Part	Available		Order	In Pump	C4 A	C8 A	
100		◆	<b>STANDARD INLET MANIFOLD :</b>	1				
100		◆	PN16 PN20 (bypass)	1		311356.01		
			PN16 PN20 (closed bypass)	1		313521.00		
	101		Main body		(1)			
	118		Pin		(1)			
	802		Valve seat (bypass)		(1)			
	892		Screw		(1)			
	893		Seal		(1)			
100		◆	<b>JACKETED INLET MANIFOLD :</b>	1				
100		◆	PN16 PN20 (bypass)	1		311360.01		
			PN16 PN20 (closed bypass)	1		313522.00		
	101		Main body		(1)			
	118		Pin		(1)			
	131		Heat jacket cover plate		(1)			
	802		Valve seat (bypass)		(1)			
	892		Screw		(1)			
	893		Seal		(1)			
119		◆	<b>Set of studs and nuts</b>	1		311508.00	311995.00	
	106		Screw		(4)			
	111		Screw		(4)			
	123		Washer		(4)			
119		◆	<b>Jacketed set of studs and nuts</b>	1		311509.00	311915.00	
	106		Screw		(4)			
	111		Screw		(4)			
	123		Washer		(4)			
	132a		Screw		(4)			
141		◆	<b>Drain Front cover and Inlet Manifold</b>	1		311530.00		•
	100		Main body		(1)			
	400		Front cover		(1)			
	140	◆	Set of drain plugs	1		311510.00		
	121		Copper-plated gasket		(2)			
	122		Plug		(2)			

(◆) Sets of parts or (▲) parts available to order.

Reference			Description	Quantity		Article code		Wear parts
Ass.	Part	Available		Order	In Pump	C4 A	C8 A	
200		◆	Set cylinder/Piston (bypass)	1		313393.00	313395.00	•
200		◆	Set cylinder/Piston (closed bypass)	1		313525.00	313526.00	•
	201		Cylinder		(1)			
	301		Piston		(1)			
	304	▲	Piston nut	1		216257	218572	
206			Set of FKM 'O' ring seals	1		311358.04		•
206			Set of CVT 'O' ring seals	1		311897.04		•
206			Jacketed set of FKM 'O' ring seals	1		311361.04		•
206			Jacketed Set of CVT 'O' ring seals	1		311898.04		•
	113		Seal		(2)			
	130		Seal (jacketed version)		(1)			
	205		Seal Ring		(1)			
	305		Seal		(1)			
	306		Seal		(1)			
	307		Seal		(1)			
401		▲	Front cover PN16 PN20	1		216354		
			Complete transmission (jacketed)					
596		◆	Standard spring	1		312306.03		
596		◆	Strong spring	1		313961.00		
596		◆	Standard spring - Hastelloy	1		313785.00		
596		◆	Strong spring - Hastelloy	1		313963.00		
	9	◆	Gasket / bearing screws	1		315271.00		
	507		Ring		(1)			
	602		Gasket		(1)			
	608		Lip seal		(2)			
	609		Bearing screws		(3)			
	8	◆	Plugs + gaskets	1		311441.00		
	715		Breather		(1)			
	773		Drain plug		(1)			
	774		Copper-plated seal		(1)			
820*		◆	Bypass - FKM -C2,5	1		313131.03		
820*		◆	Bypass - FKM -C3,5	1		313132.03		
820*		◆	Bypass - FKM -C5	1		313133.03		
820*		◆	Bypass - FKM -C8	1		313134.03		
820*		◆	Bypass - CVT -C2,5	1		313135.03		
820*		◆	Bypass - CVT -C3,5	1		313136.03		
820*		◆	Bypass - CVT -C5	1		313137.03		
820*		◆	Bypass - CVT -C8	1		313138.03		
	803		Valve head		(1)			
	804		Spring		(1)			
	819		Spring seat (only with 3/8 bar spring)		(1)			
	825		Spring base		(1)			
	826		Pressure adjustment screw		(1)			
	828		Nut		(1)			
	829		Brake spring		(1)			
	831		Pin		(1)			
	833		Bypass cap		(1)			
	834		Adjustment nut		(1)			
	838		Washer		(1)			
	896	◆	Set of seals FKM	1		313172.04		
	896	◆	Set of seals CVT	1		313173.04		
	807		Seal		(1)			
	832		Seal		(1)			
	837		Seal		(1)			
820**		◆	Closed bypass - FKM	1		313519.00		
820**		◆	Closed bypass - CVT	1		313520.00		
	807		Seal		(1)			
	828		Nut		(1)			
	832		Seal		(1)			
	833		Bypass cap		(1)			

CVT - FEP encapsulated FKM

\* For Inlet manifold with bypass \*\* For Inlet manifold with closed bypass

(◆) Sets of parts or (▲) parts available to order.

Keep this parts lists with Installation, Operation and Maintenance Instructions

To order the required spare parts, indicate the appropriate CUM numbers.



Z.I. la Plaine des Isles - 2 rue des Caillottes F-89000 AUXERRE - FRANCE

Tel : +33 (0)3 86 49 86 30 • Fax : +33 (0)3 86 49 87 17

contact@mouvex.com • www.mouvex.com