

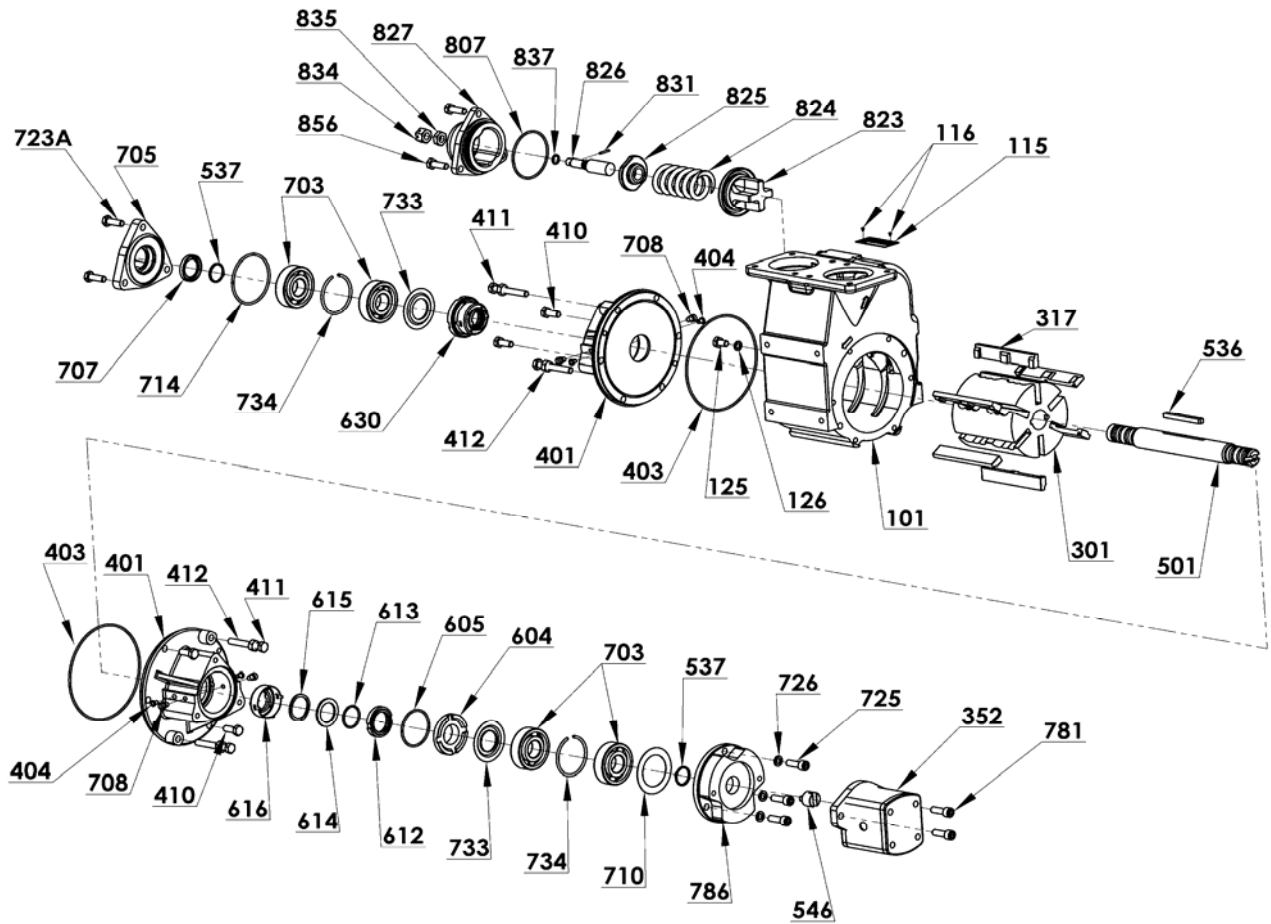
MOUVEX
MODEL :

PARTS LIST
CC8-28

PL : 1010-N01

Section	1010
Effective	September 2011
Replaces	April 2011

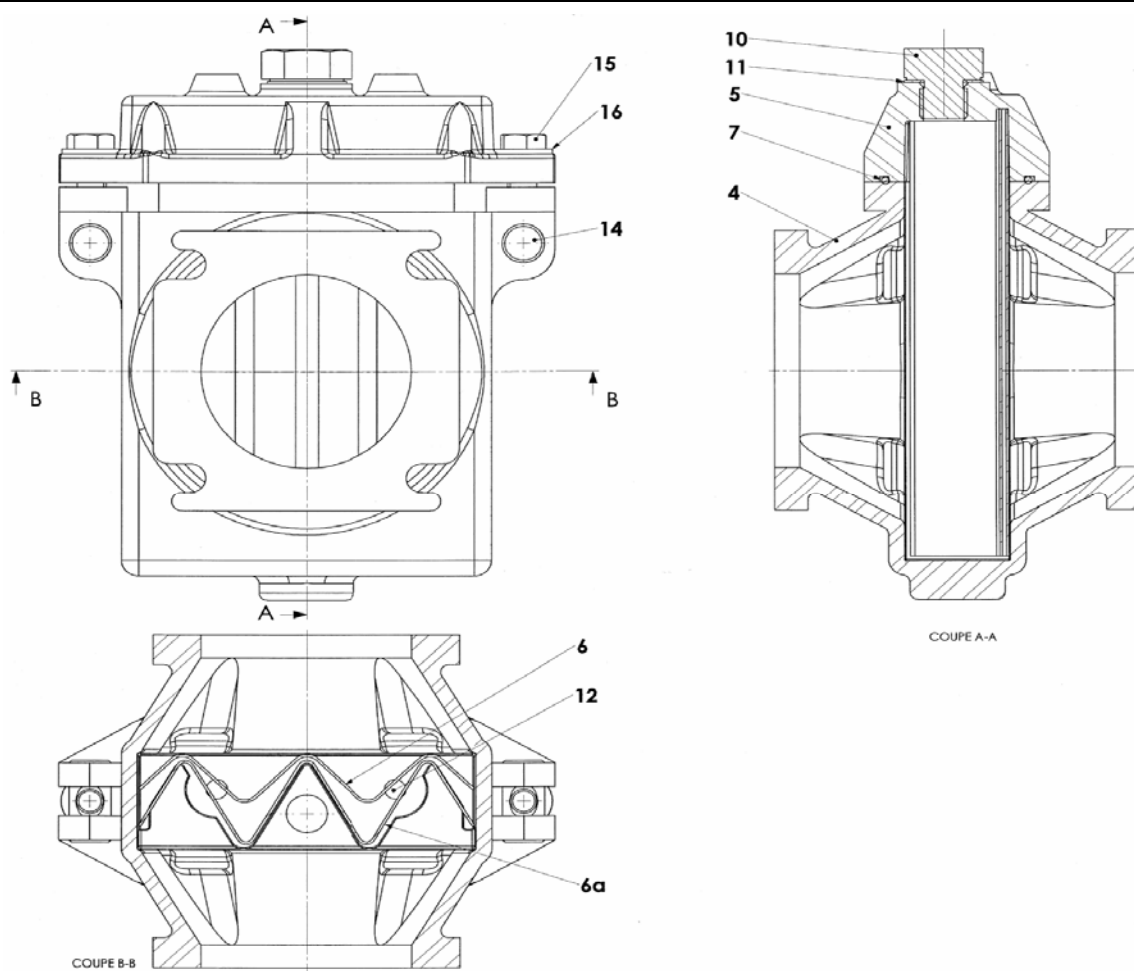
(See Instructions 1010-N00 for Installation, Operation and Maintenance)



Article code	Description	Quantity	Reference	Wear parts	Notes
314894.00	PUMP CASING ASSEMBLY	1	100		◆
	Pump casing	1	101		See 100
	Identification plate	1	115		See 100
	Rivet	2	116		See 100
301861.00	Set of plugs and seals	1	124		◆
	Capscrew HM 10X16	2	125		See 124
	Plug seal	2	126		See 124
305708.00	ROTOR ASSEMBLY	1	300		◆
	Rotor	1	301		See 300
	Vane	6	317	X	See 309
305705.00	SET OF VANES ■	1	309		◆
	Vane	6	317		See 309
301880.00	END PLATE ASSEMBLY	2	400		◆
	End plate	1	401		See 400
	Capscrew HM 10X25	4	410		See 98A
	Capscrew HM 10X70 DIN 558 ACZB	2	411		See 98A
	Nut H M10	2	412		See 98A
	Grease nipple	2	708		See 400
304366.00	SET OF END PLATE O'RINGS ■	1	409		◆
	End plate O'ring	2	403		See 409
314468.00	SHAFT ASSEMBLY	1	500		◆
	Shaft	1	501		See 500
302467.00	Set of keys ■	1	599		◆
	Rotor key	1	536		See 599
	Circlips	2	537		See 599
301867.01	MECHANICAL SEAL ASSEMBLY ■	2	630	X	◆
	Stationary seal	1	604		See 630
	Stationary seal O'ring	1	605		See 699
	Rotating seal	1	612		See 630
	Rotating seal O'ring	1	613		See 699
	Spring guide	1	614		See 630
	Spring	3	615		See 630
	Retainer shaft seal	1	616		See 630
308520.03	SET OF MECHANICAL SEAL O'RINGS	2	699		◆
	Stationary seal O'ring	1	605		See 699
	Rotating seal O'ring	1	613		See 699
314469.00	BEARING ASSEMBLY (motor side)	1	700		◆
	Ball bearing	2	703		See 704
	Shim	1	710		See 700
	Capscrew HM 10X30	3	723		See 98A
	Metallic seal	1	733		See 715
	Ring	1	734		See 700
304700.00	BEARING ASSEMBLY (opposite motor side)	1	700A		◆
	Ball bearing	2	703A		See 704
	Lip seal	1	707	X	See 715
	Bearing cover	1	705		See 700A
	Bearing cover O'ring	1	714A		See 715
	Capscrew HM 10X30	3	723A		See 98A
	Metallic seal	1	733A		See 715
	Ring	1	734A		See 700A
312102.04	SET OF BALL BEARINGS ■	1	704		◆
	Ball bearing	4	703		See 704
312103.04	SET OF PLASTIC PLUGS	1	704A		◆
	Plastic plug (to be fitted bottom side)	2	404		See 704A

Article code	Description	Quantity	Reference	Wear parts	Notes
314540.00	HYDRAULIC MOTOR ASSEMBLY	1	705A		◆
	Motor flange (elbow)	1	350 (not shown)		See 705A
	Motor flange (straight)	1	351 (not shown)		See 705A
226656	Hydraulic motor	1	352		▲
226658	Coupling	1	546		▲
	Capscrew CHC M10X30	3	725		See 98A
	Spring washer M10	3	726		See 98A
	Capscrew CHC M10X20	2	781		See 705A
	Motor bracket	1	786		See 705A
227731	HYDRAULIC MOTOR SEAL KIT ■	1	Not shown	X	◆
304720.00	SET OF COVER SEALS ■ (707+714+733)	1	715		◆
301891.01	BY-PASS ASSEMBLY	1	820		◆
204839	Valve	1	823		▲
	By-pass cup	1	827		See 820
301893.01	Adjustment device assembly	1	898		◆
	Cup O'ring	1	807		See 807
	Spring guide	1	825		See 898
	Adjusting screw	1	826		See 898
	Pin (not shown)	1	831		See 807
	Adjustment nut HK M14	1	834		See 807
	Locking nut HM M14	1	835		See 807
	Adjustment screw O'ring	1	837		See 807
	Capscrew HM 10X30	3	856		See 98A
219106	BY-PASS SPRING (4 bar)	1	824		▲
301895.00	SET OF BY-PASS SCREWS & SEALS (807+831+834+835+837)	1	899		◆
314929.00	SET OF SCREWS (410+411+412+723+725+726+856)	1	98A		◆
302468.00	SET OF SEALS (126+403+807)	1	99		◆

Accessories



Article code	Description	Quantity	Reference	Wear parts	Notes
302474.00	FLANGES KIT - Steel (not shown)	1	129A		◆
310323.00	FLANGES KIT - Stainless steel (not shown)	1	129A		◆
	Flange bored diameter 91mm	2	129		See 129A
223098	Gasket	2	131		▲
	Screw HM10 X 25 (steel)	8	132		See 129A
	Screw HM10 X 30 (stainless steel)	8	132		See 129A
	STRAINER PF80 CC8				
503660.01	with steel grids	1			◆
503661.01	with stainless steel grids	1			◆
302056.00	Casing assembly	1	2		◆
	Casing	1	4		See 2
302030.00	Rotating bolts assembly	1	8		◆
	Axle	2	14		See 8
	Screw HM10 X 50	2	15		See 8
	Washer	2	16		See 8
302529.01	Cover assembly (Steel grids) (1)	1	3		◆
302530.01	Cover assembly (Stainless steel grids) (1)	1	3		◆
	Cover	1	5		See 3
	Grid 4 mm	1	6		See 3
200874	O'ring ■ (1)	1	7		▲
	Rivet	2	12		See 3
302044.00	Plug assembly	1	13		◆
	Plug	1	10		See 13
	Seal	1	11		See 13
202232	Grid 1 mm (Steel) (1) (2)	1	6A		▲
204723	Grid 1 mm (Stainless steel) (1) (2)	1	6A		▲

Article code	Description	Quantity	Reference	Wear parts	Notes
	STRAINER PF80 CC8				
507251.02	with Nickel treatment and Stainless steel grids	1			◆
314545.00	Casing assembly	1	2		◆
	Casing	1	4		See 2
307246.00	Rotating bolts assembly	1	8		◆
	Axle	2	14		See 8
	Screw HM10 X 50	2	15		See 8
	Washer	2	16		See 8
314546.01	Cover assembly (1)	1	3		◆
	Cover	1	5		See 3
	Grid 4 mm	1	6		See 3
200874	O'ring ■ (1)	1	7		▲
	Rivet	2	12		See 3
307249.00	Plug assembly	1	13		◆
	Plug	1	10		See 13
	Seal	1	11		See 13
204723	Grid 1 mm (1) (2)	1	6A		▲

(1) The cover design changed in September 2011, the gasket 7 is replaced by an O'ring. The cover assembly is interchangeable.

The gasket 7 is no more supplied. In case of need, the complete cover assembly has to be replaced.

(2) The cover design change modified the grid length which is no more interchangeable. In this case, the complete cover assembly has

(■) Recommended parts to have on stock

(◆) Sets of parts sold only in a kit or (▲) parts available to order.

Keep this parts lists with Installation, Operation and Maintenance Instructions.

To order the required spare parts, indicate the appropriate CUM numbers.



Z.I. la Plaine des Isles - 2 rue des Caillottes F-89000 AUXERRE - France

Tél : +33 (0)3 86 49 86 30 • Fax : +33 (0)3 86 49 87 17

contact@mouvex.com • www.mouvex.com