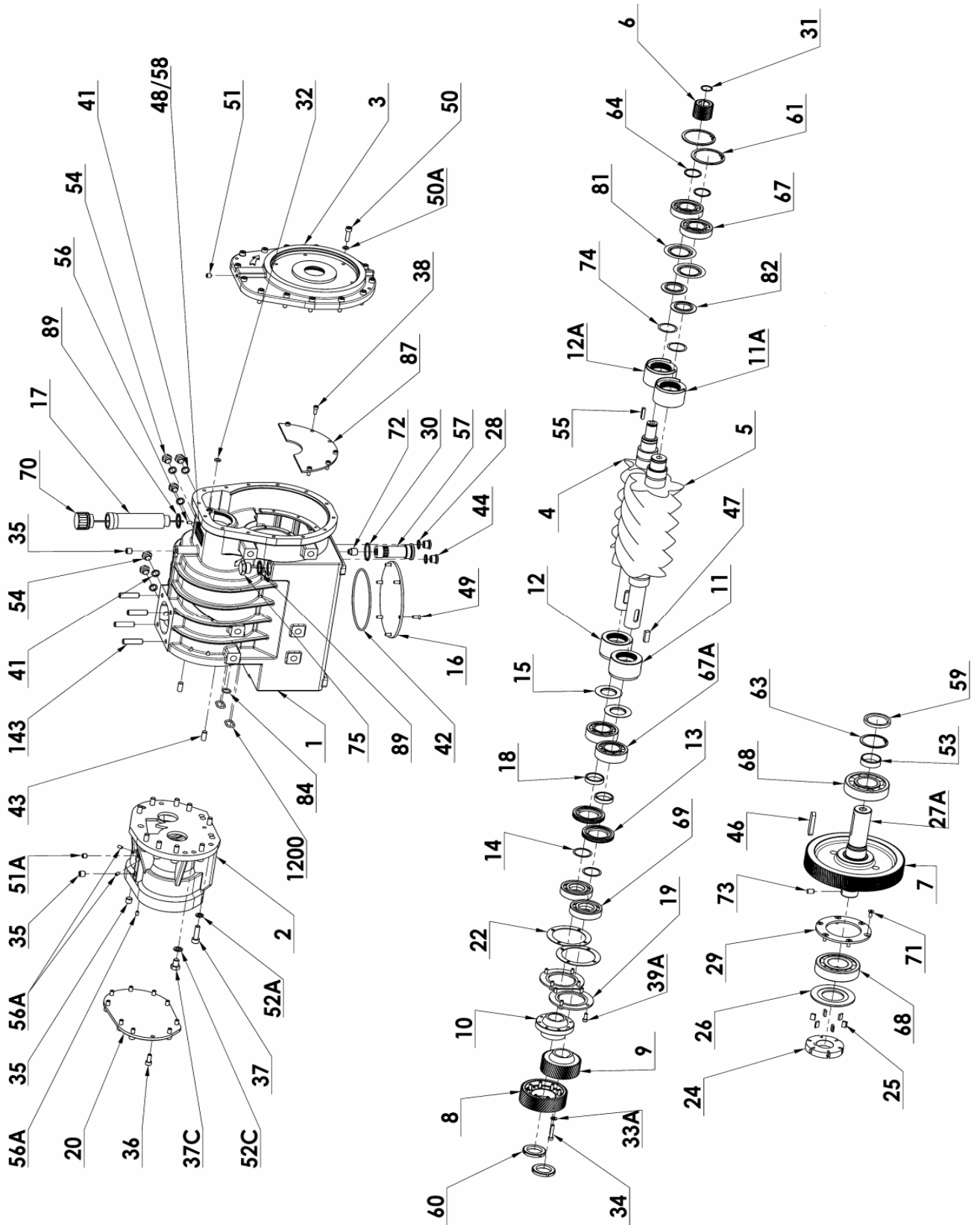


Section	1401
Effective	September 2011
Replaces	March 2011

(See Instructions 1401-G00 for Installation, Operation and Maintenance)



20R VERSION

Article code	Description	Quantity	Reference	Wear parts	Notes
	Casing	1	1		
	Front cover	1	3		
	Bronze seal (left)	1	11A		See kits A;C
	Bronze seal (right)	1	12A		See kits A;C
	Bottom plate	1	16		
219140	Pump rotor	1	24	X	▲
218823	Pump vane	6	25	X	▲
	Pump cover	1	26		
	Seal	2	28		See Kit C
	Bearing cover	1	29		
	Seal	1	30		See Kit C
	O'ring	1	32		See Kit C
	Capscrew CHC M6 X 16	5	38		
	Seal	2	41		See Kit C
	O'ring	1	42		See Kit C
	Pin	2	43		
	Magnetic plug G3/8	2	44		
	Inlet shaft key	1	46		See Kit C
	Serial number plate	1	48		
	Capscrew FHC/90 M8 X 15	6	49		See Kit C
	Capscrew CHC M8 X 30	14	50		
	Washer	14	50A		
	Plug G 1/8	1	51		
	Sleeve	1	53	X	See Kit C
	Plug G 1/4	2	54		
	Capscrew S/T B/PL HCM6 X 10	1	56		
218813	Oil filter ■	1	57		▲
	Rivet	2	58		
	Lip seal	1	59	X	See Kit C
	Circlips	2	61		
	Circlips	1	63		
	Circlips	2	64		See Kit C
	Ball bearing	2	67		See Kits A;B;C
	Ball bearing	2	68		See Kits A;B;C
	Capscrew FHC/90 M6 X 16	6	71		
	Oil filter insert	1	72		
	Pin	1	73		
	Wave spring	2	74		See kit C
	Bearing seal	2	81		See kit C
	Centrifugation disk	2	82		SP : See Kit C
	Oil plate	1	87		
215088	Inlet flange gasket (not shown)	1	116		▲
219281	Discharge flange gasket (not shown)	1	141A		▲
	Discharge port studs	4	143		
200740	O'ring	2	1200		
312134.00	MULTIPLIER 20R	1	167		◆
	Gear 26 teeth	1	6		See Kits A;B;C
	Gear 146 teeth	1	7		
	Inlet shaft	1	27A		
	Circlips	1	31		See Kits A;B;C
	Female screw key	1	55		See Kits A;B;C
313965.00	SYNCHRONIZATION GEARS	1	189		◆
	Synchronization gear 54 teeth	1	8		
	Synchronization gear 45 teeth	1	9		

20R VERSION

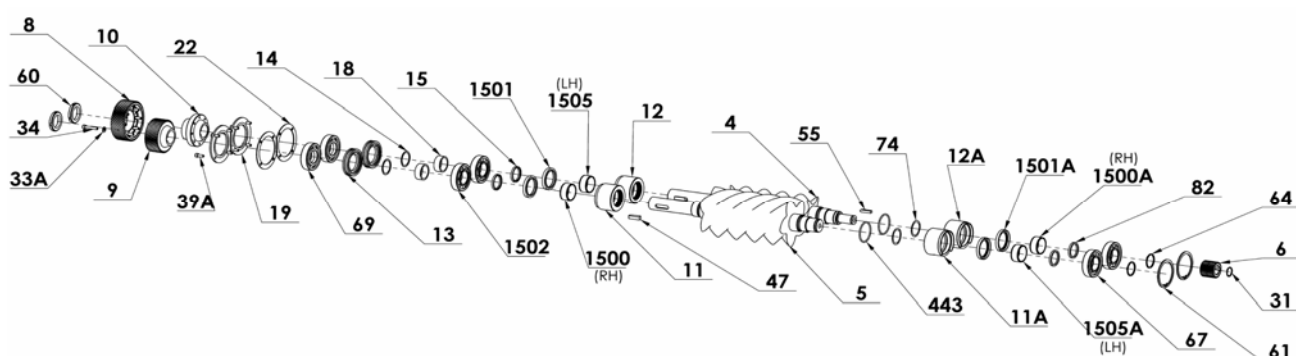
Article code	Description	Quantity	Reference	Wear parts	Notes
313343.01	GEAR BOX N ASSEMBLY	1	146		◆
	Synchronization ring	1	10		
	Lubrication spacer	2	13		
	Set of shims	2	14		See Kits A;B;C
	Centrifugation disk	2	15		
	Spacer	2	18		See Kit C
	Bearing flange	2	19		
	Cover	1	20		
	Set of shims	1	22		See Kits A;B;C
	Washer	8	33A		See KIT C
	Capscrew CHC M6 X 35	8	34		See Kit C
	Plug G 1/4	2	35		
	Capscrew CHC M8 X 20	10	36		
	Capscrew CHC M10 X 35	10	37		See kit C
	Capscrew HM 12 X 16	2	37C		
	Capscrew CHC M6 X 16	8	39A		
	Screw key	2	47		See Kit C
	Plug G 1/8	1	51A		
	Washer	10	52A		See kit C
	Washer	2	52C		
	Capscrew S/T B/PL HCM6 X 10	3	56A		
	Bearing nut	2	60		
	Ball bearing	2	67A		See Kits A;B;C
	Thrust ball bearing	2	69		See Kits A;B;C
	O'ring	1	84		See Kit C
312753.00	Set of Compressor screws	1	145		◆
	Female screw	1	4		
	Male screw	1	5		
	Gear box	1	212		
	Gear box casing	1	2		
	Bronze seal (right)	1	11		See kit A
	Bronze seal (left)	1	12		See kit A
312656.01	OIL DIPSTICK ASSEMBLY ■	1	373		◆
	Pipe	1	17		
	Dipstick	1	70		
	Plug G 3/4	1	75		
	Seal	2	89		See Kit C

30R VERSION

Article code	Description	Quantity	Reference	Wear parts	Notes
312171.00	MULTIPLIER 30R	1	167		◆
	Gear 36 teeth	1	6		
	Gear 136 teeth	1	7		
	Inlet shaft	1	27A		
	Circlips	1	31		
	Female screw key	1	55		

SAE4 VERSION : See PL 1401-Q01 Accessories

SP VERSION



References not registered below are similar to 20R version (page 2)

Article code	Description	Quantity	Reference	Wear parts	Notes
	Bronze seal (right)	1	11A		See kits A;C
	Bronze seal (left)	1	12A		See kits A;C
	O'ring	2	443		See Kit C
	Sleeve (RH)	1	1500A		See Kit C
	Lip seal	2	1501A		See Kit C
	Sleeve (LH)	1	1505A		See Kit C
314068.01	GEAR BOX SP ASSEMBLY	1	146		◆
	Synchronization ring	1	10		
	Lubrication spacer	2	13		
	Set of shims	2	14		See Kits A;B;C
	Centrifugation disk	2	15		
	Spacer	2	18		See Kit C
	Bearing flange	2	19		
	Cover	1	20 - page 1		
	Set of shims	1	22		See Kits A;B;C
	Washer	8	33A		See Kit C
	Capscrew CHC M6 X 35	8	34		See Kit C
	Plug G 1/4	1	35 - page 1		
	Capscrew CHC M8 X 20	10	36 - page 1		
	Capscrew CHC M10 X 35	10	37 - page 1		See Kit C
	Screw	2	37C - page 1		
	Capscrew CHC M6 X 16	8	39A		
	Screw key	2	47		See Kit C
	Plug 1/8	1	51A - page 1		
	Seal	10	52A - page 1		See Kit C
	Seal	2	52C - page 1		
	Screw	3	56A - page 1		
	Bearing nut	2	60		
	Ball bearing	2	67A		See Kits A;B;C
	Thrust ball bearing	2	69		See Kits A;B;C
	Seal	1	84 - page 1		See Kit C
314069.00	Set of Compressor screws - PTFE	1	145		◆
	Female screw	1	4		
	Male screw	1	5		
	Gear box	1	212		
	Gear box casing	1	2 - page 1		
	Bronze seal BP (right)	1	11		See kit A
	Bronze seal BP (left)	1	12		See kit A
	Sleeve (RH)	1	1500		See Kit C
	Lip seal	2	1501		See Kit C
	Sleeve (LH)	1	1505		See Kit C

REPAIR KITS

Article code	Description	Quantity	Reference	Wear parts	Notes
314675.00	SCREW KIT TYPHON II N 20R ASSEMBLY ■	1			◆
315280.00	SCREW KIT TYPHON II SP 20R ASSEMBLY	1			◆
	Gear 26 teeth	1	6		
	Circlips	1	31		
	O'ring	1	32		
	Female screw key	1	55		
	GEAR BOX ASSEMBLY	1	146		
	SYNCHRONIZATION GEARS	1	189		
	O'ring	2	1200		
314683.00	SCREW KIT TYPHON II N 30R ASSEMBLY	1			◆
315281.00	SCREW KIT TYPHON II SP 30R ASSEMBLY	1			◆
	Gear 36 teeth	1	6		
	Circlips	1	31		
	O'ring	1	32		
	Female screw key	1	55		
	GEAR BOX ASSEMBLY	1	146		
	SYNCHRONIZATION GEARS	1	189		
	O'ring	2	1200		

SERVICE KITS

Kit A : Bearings, sets of shims, gears, bushings and couple of screws.

Kit B : Bearings, sets of shims and gears.

Kit C : Bearings, sets of shims, gears with complete synchro gearbox couple of screws, seals, washers and cir

Article code	Description	Quantity	Reference	Wear parts	Notes
313929.00	SERVICE KIT A TYPHON II N	1			◆
	Gear 26 teeth	1	6		
	Bronze seal (right)	2	11A		
	Bronze seal (left)	2	12A		
	Set of shims	2	14		
	Set of shims	1	22		
	Circlips	1	31		
	Female screw key	1	55		
	Ball bearing	2	67		
	Ball bearing	2	67A		
	Ball bearing	2	68		
	Thrust ball bearing	2	69		
	SET OF COMPRESSOR SCREWS	1	145		
313927.00	SERVICE KIT B TYPHON II N	1			◆
	Gear 26 teeth	1	6		
	Set of shims	2	14		
	Set of shims	1	22		
	Circlips	1	31		
	Female screw key	1	55		
	Ball bearing	2	67		
	Ball bearing	2	67A		
	Ball bearing	2	68		
	Thrust ball bearing	2	69		

SERVICE KITS

Article code	Description	Quantity	Reference	Wear parts	Notes
314393.00	SERVICE KIT C TYPHON II N	1			◆
	Gear 26 teeth	1	6		
	Bronze seal (left)	1	11A		
	Bronze seal (right)	1	12A		
	Set of shims	2	14		
	Spacer	2	18		
	Set of shims	1	22		
	Pump vane	6	25	X	
	Seal	2	28		
	Seal	1	30		
	Circlips	1	31		
	O'ring	1	32		
	Washer	8	33A		
	Capscrew CHC M6 X 35	8	34		
	Capscrew CHC M10 X 35	10	37		
	Seal	2	41		
	O'ring	1	42		
	Inlet shaft key	1	46		
	Screw key	2	47		
	Capscrew FHC/90 M8 X 15	6	49		
	Washer	10	52A		
	Sleeve	1	53	X	
	Female screw key	1	55		
	Lip seal	1	59	X	
	Circlips	2	64		
	Ball bearing	2	67		
	Ball bearing	2	67A		
	Ball bearing	2	68		
	Thrust ball bearing	2	69		
	Wave spring	2	74		
	Bearing seal	2	81		
	O'ring	1	84		
	Seal	2	89		
	SET OF COMPRESSOR SCREWS	1	145		
	SYNCHRONIZATION GEARS	1	189		
	GEAR BOX	1	212		

SERVICE KITS

Article code	Description	Quantity	Reference	Wear parts	Notes
315609.00	SERVICE KIT C TYPHON II SP	1			◆
	Gear 26 teeth	1	6		
	Bronze seal (left)	1	11A		
	Bronze seal (right)	1	12A		
	Set of shims	2	14		
	Spacer	2	18		
	Set of shims	1	22		
	Pump vane	6	25	X	
	Seal	2	28		
	Seal	1	30		
	Circlips	1	31		
	O'ring	1	32		
	Washer	8	33A		
	Capscrew CHC M6 X 35	8	34		
	Capscrew CHC M10 X 35	10	37		
	Seal	2	41		
	O'ring	1	42		
	Inlet shaft key	1	46		
	Screw key	2	47		
	Capscrew FHC/90 M8 X 15	6	49		
	Washer	10	52A		
	Sleeve	1	53	X	
	Female screw key	1	55		
	Lip seal	1	59	X	
	Circlips	2	64		
	Ball bearing	2	67		
	Ball bearing	2	67A		
	Ball bearing	2	68		
	Thrust ball bearing	2	69		
	Wave spring	2	74		
	Bearing seal	2	81		
	Centrifugation disk	2	82		
	O'ring	1	84		
	Seal	2	89		
	SET OF COMPRESSOR SCREWS	1	145		
	SYNCHRONIZATION GEARS	1	189		
	GEAR BOX	1	212		
	O'ring	2	443		
	Sleeve (RH)	1	1500		
	Sleeve (RH)	1	1500A		
	Lip seal	2	1501	X	
	Lip seal	2	1501A	X	
	Sleeve (LH)	1	1505	X	
	Sleeve (LH)	1	1505A	X	

(■) Recommended parts to have on stock

(◆) Sets of parts sold only in a kit or (▲) parts available to order.

Keep this parts lists with Installation, Operation and Maintenance Instructions.

To order the required spare parts, indicate the appropriate CUM numbers.



Z.I. la Plaine des Isles - 2 rue des Caillottes F-89000 AUXERRE - France

Tél : +33 (0)3 86 49 86 30 • Fax : +33 (0)3 86 49 87 17

contact@mouvex.com • www.mouvex.com