

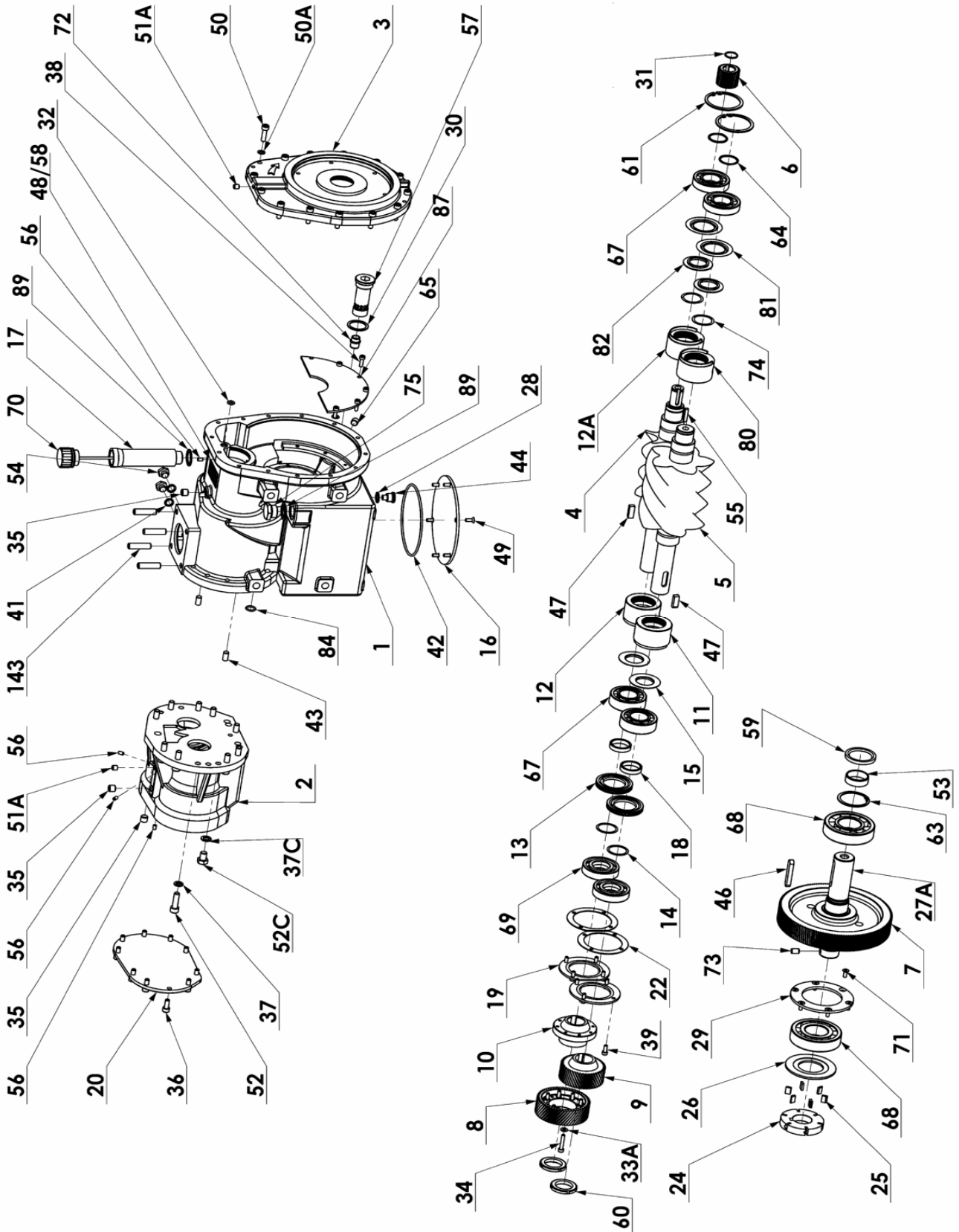
MOUVEX
MODEL :

PARTS LIST
MISTRAL

PL : 1401-J01

Section	1401
Effective	March 2011
Replaces	New

(See Instructions 1401-J00 for Installation, Operation and Maintenance)



20R VERSION

Article code	Description	Quantity	Reference	Wear parts	Notes
	Casing	1	1		
	Front cover	1	3		
	Bronze seal (right)	1	12A		See kit C
	Bottom plate	1	16		
219140	Pump rotor	1	24	X	▲
218823	Pump vane	6	25	X	▲
	Pump cover	1	26		
	Seal	1	28		
	Bearing cover	1	29		
	Oil Filter seal	1	30		See kit C
	O'ring	1	32		See kit C
	Plug G 1/4	1	35		
	Capscrew CHC M6 X 16	5	38		
	Seal	2	41		See kit C
	O'ring	1	42		See kit C
	Pin	2	43		
215228	Magnetic plug G3/8	1	44		▲
	Inlet shaft key	1	46		See kit C
	Serial number plate	1	48		
	Capscrew FHC/90 M8 X 15	6	49		See kit C
	Capscrew CHC M8 X 30	14	50		
	Washer	14	50A		
	Sleeve	1	53	X	See kit C
	Plug G 1/4	2	54		
	Screw S/T B/PL HCM6 X 10	1	56		
218813	Oil filter ■	1	57		▲
	Rivet	2	58		
	Lip seal	1	59	X	See kit C
	Circlips	2	61		
	Circlips	1	63		
	Circlips	2	64		See kit C
	Plug G 1/4	1	65		
	Ball bearing	2	67		See kit A;B;C
	Ball bearing	2	68		See kit A;B;C
	Capscrew FHC/90 M6 X 16	6	71		
	Oil filter insert	1	72		
	Pin	1	73		
	Wave spring	2	74		See kit C
	Bronze seal (left)	1	80		See kit A
	Bearing seal	2	81		See Kit C
	Centrifugation disk	2	82		
	Oil plate	1	87		
219281	Inlet flange gasket (not shown)	1	116		▲
219281	Discharge flange gasket (not shown)	1	141A		▲
	Discharge port studs	4	143		
312134.00	MULTIPLIER 20R	1	167		◆
	Gear 26 teeth	1	6		See kits A;B;C
	Gear 146 teeth	1	7		
	Inlet shaft	1	27A		
	Circlips	1	31		See kits A;B;C
	Female screw key	1	55		See kits A;B;C
313965.00	SYNCHRONIZATION GEARS	1	189		◆
	Synchronization gear 54 teeth	1	8		
	Synchronization gear 45 teeth	1	9		
312656.01	OIL DIPSTICK ASSEMBLY ■	1	373		◆
	Pipe	1	17		
	Dipstick	1	70		
	Plug G 3/4	1	75		
	Seal	2	89		See kit C

20R VERSION

Article code	Description	Quantity	Reference	Wear parts	Notes
314678.00	GEAR BOX ASSEMBLY	1	146		◆
	Synchronization ring	1	10		
	Lubrication spacer	2	13		
	Set of shims	2	14		See kit A;B;C
	Centrifugation disk	2	15		
	Spacer	2	18		See kit A;C
	Bearing flange	2	19		
	Cover	1	20		
	Set of shims	1	22		See kit A;B;C
	Washer	8	33A		See kit C
	Capscrew CHC M6 X 35	8	34		See kit C
	Plug G 1/4	1	35		
	Capscrew CHC M8 X 20	10	36		
	Washer	10	37		See kit C
	Capscrew HM 12 X 16	2	37C		
	Capscrew CHC M6 X 16	8	39		
	Screw key	2	47		See kit C
	Plug G 1/8	2	51A		
	Washer	10	52		See kit C
	Washer	2	52C		
	Capscrew S/T B/PL HCM6 X 10	3	56		
	Bearing nut	2	60		
	Ball bearing	2	67		See kit A;B;C
	Thrust ball bearing	2	69		See kit A;B;C
	O'ring	1	84		See kit C
312133.00	Set of Compressor screws	1	145		◆
	Female screw	1	4		
	Male screw	1	5		
	Gear box	1	212		See kit C
	Gear box casing	1	2		
	Bronze seal (right)	1	11		See kit A
	Bronze seal (left)	1	12		See kit C

30R VERSION

Article code	Description	Quantity	Reference	Wear parts	Notes
312171.00	MULTIPLIER 30R	1	167		◆
	Gear 36 teeth	1	6		
	Gear 136 teeth	1	7		
	Inlet shaft	1	27A		
	Circlips	1	31		
	Female screw key	1	55		

SAE4 VERSION : See PL 1401-Q01 Accessories

REPAIR KITS

Article code	Description	Quantity	Reference	Wear parts	Notes
314679.00	SCREW KIT MISTRAL N 20R ASSEMBLY ■	1			◆
	Gear 26 teeth	1	6		
	Circlips	1	31		
	O'ring	1	32		
	Female screw key	1	55		
	GEAR BOX ASSEMBLY	1	146		
	Synchronization gears	1	189		

314680.00	SCREW KIT MISTRAL N 30R ASSEMBLY	1			◆
	Gear 36 teeth	1	6		
	Circlips	1	31		
	O'ring	1	32		
	Female screw key	1	55		
	GEAR BOX ASSEMBLY	1	146		
	Synchronization gears	1	189		

SERVICE KITS

Kit A : Bearings, sets of shims, gears, bushings and couple of screws.

Kit B : Bearings, sets of shims and gears.

Kit C : Bearings, sets of shims, gears with complete synchro gearbox couple of screws, seals, washers and c

Article code	Description	Quantity	Reference	Wear parts	Notes
312616.01	SERVICE KIT A MISTRAL N	1			◆
	Gear 26 teeth	1	6		
	Bronze seal (right)	2	11 + 12A		
	Set of shims	2	14		
	Spacer	2	18		
	Set of shims	1	22		
	Circlips	1	31		
	Female screw key	1	55		
	Ball bearing	4	67		
	Ball bearing	2	68		
	Thrust ball bearing	2	69		
	Bronze seal (left)	2	80		
	Set of Compressor screws	1	145		

312615.01	SERVICE KIT B MISTRAL N	1			◆
	Gear 26 teeth	1	6		
	Set of shims	2	14		
	Set of shims	1	22		
	Circlips	1	31		
	Female screw key	1	55		
	Ball bearing	4	67		
	Ball bearing	2	68		
	Thrust ball bearing	2	69		

SERVICE KITS

Article code	Description	Quantity	Reference	Wear parts	Notes
314391.00	SERVICE KIT C MISTRAL N	1			◆
	Gear 26 teeth	1	6		
	Bronze seal (left)	1	11A		
	Bronze seal (right)	1	12A		
	Set of shims	2	14		
	Spacer	2	18		
	Set of shims	1	22		
	Pump vane	6	25	X	
	Seal	1	30		
	Circlips	1	31		
	O'ring	1	32		
	Washer	8	33A		
	Capscrew CHC M6 X 35	8	34		
	Washer	10	37		
	Seal	2	41		
	O'ring	1	42		
	Inlet shaft key	1	46		
	Screw key	2	47		
	Capscrew FHC/90 M8 X 15	6	49		
	Washer	10	52		
	Sleeve	1	53	X	
	Female screw key	1	55		
	Lip seal	1	59	X	
	Circlips	2	64		
	Ball bearing	4	67		
	Ball bearing	2	68		
	Thrust ball bearing	2	69		
	Wave spring	2	74		
	Bearing seal	2	81		
	O'ring	1	84		
	Seal (not shown)	2	89		
	Set of Compressor screws	1	145		
	Synchronization gears	1	189		
	Gear box	1	212		

- (■) Recommended parts to have on stock
- (◆) Sets of parts sold only in a kit or (▲) parts available to order.

Keep this parts lists with Installation, Operation and Maintenance Instructions.
To order the required spare parts, indicate the appropriate CUM numbers.



Z.I. la Plaine des Isles - 2 rue des Caillottes F-89000 AUXERRE - France
Tél : +33 (0)3 86 49 86 30 • Fax : +33 (0)3 86 49 87 17
contact@mouvex.com • www.mouvex.com