

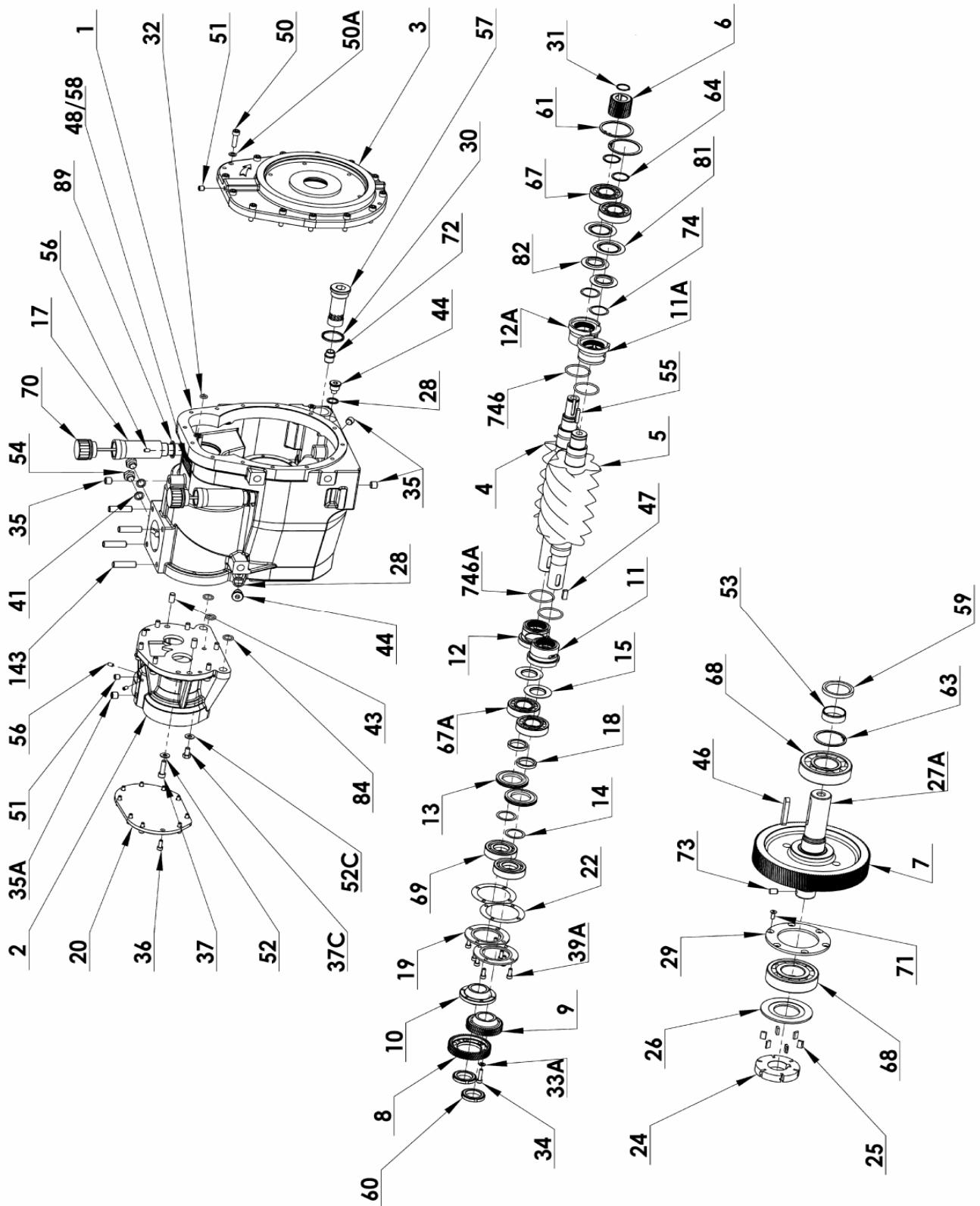
MOUVEX
MODEL :

PARTS LIST
B600

PL : 1401-K01

| | |
|-----------|----------------|
| Section | 1401 |
| Effective | September 2011 |
| Replaces | March 2011 |

(See Instructions 1401-K00 for Installation, Operation and Maintenance)



20R VERSION

| Article code | Description | Quantity | Reference | Wear parts | Notes |
|------------------|-------------------------------------|----------|------------|------------|----------------|
| | Casing | 1 | 1 | | |
| | Front cover | 1 | 3 | | |
| | Bronze seal (left) | 1 | 11A | | See Kits A;C |
| | Bronze seal (right) | 1 | 12A | | See Kits A;C |
| 219140 | Pump rotor | 1 | 24 | X | ▲ |
| 218823 | Pump vane | 6 | 25 | X | ▲ |
| | Pump cover | 1 | 26 | | |
| | Seal | 3 | 28 | | |
| | Bearing cover | 1 | 29 | | |
| | Oil Filter seal | 1 | 30 | | See kit C |
| | O'ring | 1 | 32 | | See Kit C |
| | Plug G1/4 | 5 | 35 | | |
| | Seal | 3 | 41 | | See kit C |
| | Pin | 2 | 43 | | |
| 215228 | Magnetic plug G3/8 | 3 | 44 | | ▲ |
| | Inlet shaft key | 1 | 46 | | See Kit C |
| | Screw key | 2 | 47 | | See kit C |
| | Serial number plate | 1 | 48 | | |
| | Capscrew CHC M8 X 30 | 14 | 50 | | See kit C |
| | Washer | 14 | 50A | | |
| | Sleeve | 1 | 53 | X | See Kit C |
| | Plug G 1/4 | 3 | 54 | | |
| | Screw HC M6 X 10 | 1 | 56 | | |
| 218813 | Oil filter ■ | 1 | 57 | | ▲ |
| | Rivet | 2 | 58 | | |
| | Lip seal | 1 | 59 | X | See kit C |
| | Circlips | 2 | 61 | | |
| | Circlips | 1 | 63 | | |
| | Circlips | 2 | 64 | | See Kit C |
| | Ball bearing | 2 | 67 | | See Kits A;B;C |
| | Ball bearing | 2 | 68 | | See Kits A;B;C |
| | Capscrew FHC/90 M6 X 16 | 6 | 71 | | |
| | Oil filter insert | 1 | 72 | | |
| | Pin | 1 | 73 | | |
| | Wave spring | 2 | 74 | | See kit C |
| | Bearing seal | 2 | 81 | | See kit C |
| | Centrifugation disk | 2 | 82 | | |
| 219281 | Inlet flange gasket (not shown) | 1 | 116 | | ▲ |
| 219281 | Discharge flange gasket (not shown) | 1 | 141A | | ▲ |
| | Discharge port studs | 4 | 143 | | |
| 312134.00 | MULTIPLIER 20R | 1 | 167 | | ◆ |
| | Gear 26 teeth | 1 | 6 | | See kits A;B;C |
| | Gear 146 teeth | 1 | 7 | | |
| | Inlet shaft | 1 | 27A | | |
| | Circlips | 1 | 31 | | See kits A;B;C |
| | Female screw key | 1 | 55 | | See kits A;B;C |
| 313966.00 | SYNCHRONIZATION GEARS | 1 | 189 | | ◆ |
| | Synchronization gear 54 teeth | 1 | 8 | | |
| | Synchronization gear 45 teeth | 1 | 9 | | |
| 313470.00 | OIL DIPSTICK ASSEMBLY ■ | 2 | 373 | | ◆ |
| | Pipe | 1 | 17 | | |
| | Dipstick | 1 | 70 | | |
| | Seal | 2 | 89 | | See Kit C |
| | O'ring | 2 | 746 | | See Kit C |

20R VERSION

| Article code | Description | Quantity | Reference | Wear parts | Notes |
|------------------|---------------------------------|----------|------------|------------|----------------|
| 313346.00 | GEAR BOX ASSEMBLY | 1 | 146 | | ◆ |
| | Synchronization ring | 1 | 10 | | |
| | Lubrication spacer | 2 | 13 | | |
| | Set of shims | 2 | 14 | | See Kits A;B;C |
| | Centrifugation disk | 2 | 15 | | |
| | Spacer | 2 | 18 | | See kit C |
| | Bearing flange | 2 | 19 | | |
| | Cover | 1 | 20 | | |
| | Set of shims | 2 | 22 | | See Kits A;B;C |
| | Washer | 6 | 33A | | See kit C |
| | Capscrew CHC M6 X 18 | 6 | 34 | | See kit C |
| | Plug G1/4 | 1 | 35A | | |
| | Capscrew CHC M8 X 20 | 10 | 36 | | |
| | Capscrew CHC M8 X 30 | 8 | 37 | | See kit C |
| | Capscrew HM 8 X 16 | 2 | 37C | | |
| | Capscrew CHC M6 X 16 | 8 | 39A | | |
| | Plug G 1/8 | 2 | 51 | | |
| | Washer | 8 | 52 | | See Kit C |
| | Washer | 2 | 52C | | |
| | Screw HC M6 X 10 | 3 | 56 | | |
| | Bearing nut | 2 | 60 | | |
| | Ball bearing | 2 | 67A | | See Kits A;B;C |
| | Thrust ball bearing | 2 | 69 | | See Kits A;B;C |
| | O'ring | 3 | 84 | | See kit C |
| 313347.00 | Set of Compressor screws | 1 | 145 | | ◆ |
| | Female screw | 1 | 4 | | |
| | Male screw | 1 | 5 | | |
| | Gear box | 1 | 212 | | See kit C |
| | Gear box casing | 1 | 2 | | |
| | Bronze seal (right) | 1 | 11 | | See Kits A;C |
| | Bronze seal (left) | 1 | 12 | | See Kits A;C |
| | O'ring | 2 | 746A | | See Kit C |

30R VERSION

| Article code | Description | Quantity | Reference | Wear parts | Notes |
|------------------|-----------------------|----------|------------|------------|-------|
| 312171.00 | MULTIPLIER 30R | 1 | 167 | | ◆ |
| | Gear 36 teeth | 1 | 6 | | |
| | Gear 136 teeth | 1 | 7 | | |
| | Inlet shaft | 1 | 27A | | |
| | Circlips | 1 | 31 | | |
| | Female screw key | 1 | 55 | | |

SAE4 VERSION : See PL 1401-Q01 Accessories

REPAIR KITS

| Article code | Description | Quantity | Reference | Wear parts | Notes |
|------------------|--|----------|-----------|------------|-------|
| 314676.00 | SCREW KIT B600 N 20R ASSEMBLY ■ | 1 | | | ◆ |
| | Gear 26 teeth | 1 | 6 | | |
| | Circlips | 1 | 31 | | |
| | O'ring | 1 | 32 | | |
| | Female screw key | 1 | 55 | | |
| | Gear Box assembly | 1 | 146 | | |
| | Synchronization gears | 1 | 189 | | |

| | | | | | |
|------------------|--------------------------------------|----------|-----|--|---|
| 314682.00 | SCREW KIT B600 N 30R ASSEMBLY | 1 | | | ◆ |
| | Gear 36 teeth | 1 | 6 | | |
| | Circlips | 1 | 31 | | |
| | O'ring | 1 | 32 | | |
| | Female screw key | 1 | 55 | | |
| | Gear Box assembly | 1 | 146 | | |
| | Synchronization gears | 1 | 189 | | |

SERVICE KITS

Kit A : Bearings, sets of shims, gears, bushings and couple of screws.

Kit B : Bearings, sets of shims and gears.

Kit C : Bearings, sets of shims, gears with complete synchro gearbox couple of screws, seals, washers and c

| Article code | Description | Quantity | Reference | Wear parts | Notes |
|------------------|-----------------------------|----------|-----------|------------|-------|
| 313928.00 | SERVICE KIT A B600 N | 1 | | | ◆ |
| | Gear 26 teeth | 1 | 6 | | |
| | Bronze seal (left) | 2 | 11A | | |
| | Bronze seal (right) | 2 | 12A | | |
| | Set of shims | 2 | 14 | | |
| | Set of shims | 1 | 22 | | |
| | Circlips | 1 | 31 | | |
| | Female screw key | 1 | 55 | | |
| | Ball bearing | 2 | 67 | | |
| | Ball bearing | 2 | 67A | | |
| | Ball bearing | 2 | 68 | | |
| | Thrust ball bearing | 2 | 69 | | |
| | Set of Compressor screws | 1 | 145 | | |

| | | | | | |
|------------------|-----------------------------|----------|-----|--|---|
| 313926.00 | SERVICE KIT B B600 N | 1 | | | ◆ |
| | Gear 26 teeth | 1 | 6 | | |
| | Set of shims | 2 | 14 | | |
| | Set of shims | 1 | 22 | | |
| | Circlips | 1 | 31 | | |
| | Female screw key | 1 | 55 | | |
| | Ball bearing | 2 | 67 | | |
| | Ball bearing | 2 | 67A | | |
| | Ball bearing | 2 | 68 | | |
| | Thrust ball bearing | 2 | 69 | | |

SERVICE KITS

| Article code | Description | Quantity | Reference | Wear parts | Notes |
|--------------|-----------------------------|----------|-----------|------------|-------|
| 314390.00 | SERVICE KIT C B600 N | 1 | | | ◆ |
| | Gear 26 teeth | 1 | 6 | | |
| | Bronze seal (left) | 1 | 11A | | |
| | Bronze seal (right) | 1 | 12A | | |
| | Set of shims | 2 | 14 | | |
| | Spacer | 2 | 18 | | |
| | Set of shims | 2 | 22 | | |
| | Pump vane | 6 | 25 | | |
| | Oil Filter seal | 1 | 30 | | |
| | Circlips | 1 | 31 | | |
| | O'ring | 1 | 32 | | |
| | Washer | 6 | 33A | | |
| | Capscrew CHC M6 X 18 | 6 | 34 | | |
| | Capscrew CHC M8 X 30 | 8 | 37 | | |
| | Seal | 3 | 41 | | |
| | Magnetic plug G3/8 | 3 | 44 | | |
| | Inlet shaft key | 1 | 46 | | |
| | Male screw key | 2 | 47 | | |
| | Washer | 8 | 52 | | |
| | Sleeve | 1 | 53 | X | |
| | Female screw key | 1 | 55 | | |
| | Lip seal | 1 | 59 | X | |
| | Circlips | 2 | 64 | | |
| | Ball bearing | 2 | 67 | | |
| | Ball bearing | 2 | 67A | | |
| | Ball bearing | 2 | 68 | | |
| | Thrust ball bearing | 2 | 69 | | |
| | Wave spring | 2 | 74 | | |
| | Bearing seal | 2 | 81 | | |
| | O'ring | 3 | 84 | | |
| | Seal | 2 | 89 | | |
| | Set of Compressor screws | 1 | 145 | | |
| | Synchronization gears | 1 | 189 | | |
| | Gear box | 1 | 212 | | |
| | O'ring | 2 | 746 | | |

(■) Recommended parts to have on stock

(◆) Sets of parts sold only in a kit or (▲) parts available to order.

Keep this parts lists with Installation, Operation and Maintenance Instructions.

To order the required spare parts, indicate the appropriate CUM numbers.



Z.I. la Plaine des Isles - 2 rue des Caillottes F-89000 AUXERRE - France

Tél : +33 (0)3 86 49 86 30 • Fax : +33 (0)3 86 49 87 17

contact@mouvex.com • www.mouvex.com