

MOUVEX

MODEL :

PARTS LIST

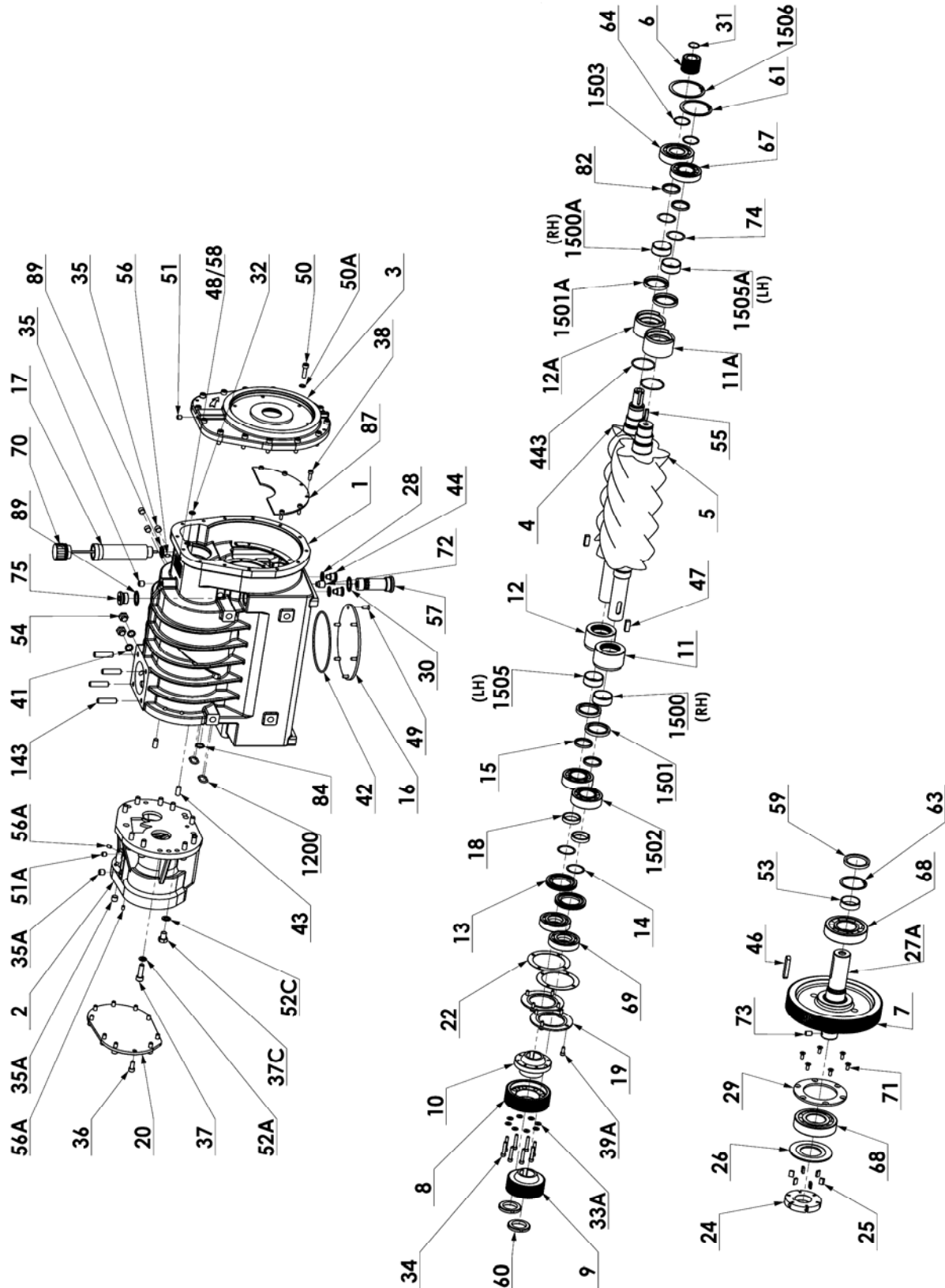
B1500

PL : 1401-T01

Section
Effective
Replaces

1401
March 2011
New

(See Instructions 1401-T00 for Installation, Operation and Maintenance)



20R VERSION

Article code	Description	Quantity	Reference	Wear parts	Notes
	Casing	1	1		
	Front cover	1	3		
	Bronze seal (left)	1	11A		See Kit A;C
	Bronze seal (right)	1	12A		See Kit A;C
	Bottom plate	1	16		
219140	Pump rotor	1	24		▲
218823	Pump vane	6	25		▲
	Pump cover	1	26		
	Seal	2	28		See Kit C
	Bearing cover	1	29		
	Seal	1	30		See Kit C
	O'ring	1	32		See Kit C
	Capscrew CHC M6 X 16	5	38		
	Seal	2	41		See Kit C
	O'ring	1	42		See Kit C
	Pin	2	43		
215228	Magnetic plug G3/8	2	44		▲
	Inlet shaft key	1	46		See Kit C
	Serial number plate	1	48		
	Capscrew FHC/90 M8 X 15	6	49		See Kit C
	Capscrew CHC M8 X 30	14	50		
	Washer	14	50A		
	Plug G 1/8	1	51		
	Sleeve	1	53	X	See Kit C
	Plug G 1/4	2	54		
	Capscrew S/T B/PL HCM6 X 10	1	56		
218813	Oil filter ■	1	57		▲
	Rivet	2	58		
	Lip seal	1	59	X	See Kit C
	Circlips	1	61		
	Circlips	1	63		See Kit C
	Circlips	2	64		See Kit C
	Ball bearing	1	67		See Kit A;B;C
	Ball bearing	2	68		See Kit A;B;C
	Capscrew FHC/90 M6 X 16	6	71		
	Oil filter insert	1	72		
	Pin	1	73		
	Wave spring	2	74		See Kit C
	Centrifugation disk	2	82		
	Oil plate	1	87		
215088	Inlet flange gasket (not shown)	1	116		▲
219281	Discharge flange gasket (not shown)	1	141		▲
	Discharge port studs	4	143		
	O'ring	2	443		See Kit A;C
	O'ring	2	1200		See Kit A;C
	Sleeve (RH)	1	1500A	X	See Kit A;C
	Lip seal	2	1501A	X	See Kit A;C
	Ball bearing	1	1503		See Kit A;B;C
	Sleeve (LH)	1	1505A	X	See Kit A;C
	Circlips	1	1506		
312134.00	MULTIPLIER 20R	1	167		◆
	Gear 26 teeth	1	6		See kits A;B;C
	Gear 146 teeth	1	7		
	Inlet shaft	1	27A		
	Circlips	1	31		See Kit A;B;C
	Female screw key	1	55		See Kit A;B;C

20R VERSION

Article code	Description	Quantity	Reference	Wear parts	Notes
313869.00	GEAR BOX ASSEMBLY	1	146		◆
	Synchronization ring	1	10		
	Lubrication spacer	2	13		
	Set of shims	2	14		See Kit A;B;C
	Centrifugation disk	2	15		See Kit C
	Spacer	2	18		See Kit A;C
	Bearing flange	2	19		
	Cover	1	20		
	Set of shims	1	22		See Kit A;B;C
	Washer	8	33A		See Kit C
	Capscrew CHC M6 X 35	8	34		See Kit C
	Plug G1/4	2	35A		
	Capscrew CHC M8 X 20	10	36		
	Capscrew CHC M10 X 35	10	37		See Kit C
	Screw	2	37C		
	Capscrew CHC M6 X 16	8	39A		
	Screw key	2	47		See Kit C
	Plug G 1/8	1	51A		
	Washer	10	52A		See Kit C
	Washer	2	52C		
	Capscrew S/T B/PL HCM6 X 10	3	56A		
	Bearing nut	2	60		
	Thrust ball bearing	2	69		See Kit A;B;C
	O'ring	1	84		See Kit C
313868.00	Set of Compressor screws	1	145		◆
	Female screw	1	4		
	Male screw	1	5		
	Gear box	1	212		See Kit C
	Gear box casing	1	2		
	Bronze seal (right)	1	11		See Kit A
	Bronze seal (left)	1	12		See Kit A
	Sleeve (RH)	1	1500	X	See Kit A;C
	Lip seal	2	1501	X	See Kit A;C
	Ball bearing	2	1502		See Kit A;B;C
	Sleeve (LH)	1	1505	X	See Kit A;C
313965.00	SYNCHRONIZATION GEARS	1	189		◆
	Synchronization gear 54 teeth	1	8		
	Synchronization gear 45 teeth	1	9		
312656.01	OIL DIPSTICK ASSEMBLY ■	1	373		◆
	Pipe	1	17		
	Dipstick	1	70		
	Plug G 3/4	1	75		
	Seal	2	89		

30R VERSION

Article code	Description	Quantity	Reference	Wear parts	Notes
312171.00	MULTIPLIER 30R	1	167		◆
	Gear 36 teeth	1	6		
	Gear 136 teeth	1	7		
	Inlet shaft	1	27A		
	Circlips	1	31		
	Female screw key	1	55		

SAE4 VERSION : See PL 1401-Q01 Accessories

REPAIR KITS

Article code	Description	Quantity	Reference	Wear parts	Notes
314677.00	SCREW KIT B1500 N 20R ASSEMBLY ■	1			◆
	Gear 26 teeth	1	6		
	Circlips	1	31		
	O'ring	1	32		
	Female screw key	1	55		
	GEAR BOX ASSEMBLY	1	146		
	SYNCHRONIZATION GEARS	1	189		
	O'ring	2	1200		
314681.00	SCREW KIT B1500 N 30R ASSEMBLY ■	1			◆
	Gear 36 teeth	1	6		
	Circlips	1	31		
	O'ring	1	32		
	Female screw key	1	55		
	GEAR BOX ASSEMBLY	1	146		
	SYNCHRONIZATION GEARS	1	189		
	O'ring	2	1200		

SERVICE KITS

Kit A : Bearings, sets of shims, gears, bushings and couple of screws.

Kit B : Bearings, sets of shims and gears.

Kit C : Bearings, sets of shims, gears with complete synchro gearbox couple of screws, seals, washers and c

Article code	Description	Quantity	Reference	Wear parts	Notes
314051.00	SERVICE KIT A B1500 N	1			◆
	Gear 26 teeth	1	6		
	Bronze seal (right)	1	11		
	Bronze seal (left)	1	11A		
	Bronze seal (left)	1	12		
	Bronze seal (right)	1	12A		
	Set of shims	2	14		
	Spacer	2	18		
	Set of shims	1	22		
	Circlips	1	31		
	Female screw key	1	55		
	Ball bearing	1	67		
	Ball bearing	2	68		
	Thrust ball bearing	2	69		
	Set of Compressor screws	1	145		
	O'ring	2	443		
	O'ring	2	1200		
	Sleeve (RH)	1	1500	X	
	Sleeve (RH)	1	1500A	X	
	Lip seal	2	1501	X	
	Lip seal	2	1501A	X	
	Ball bearing	2	1502		
	Ball bearing	1	1503		
	Sleeve (LH)	1	1505	X	
	Sleeve (LH)	1	1505A	X	
313933.00	SERVICE KIT B B1500 N	1			◆
	Gear 26 teeth	1	6		
	Set of shims	2	14		
	Set of shims	1	22		
	Circlips	1	31		
	Female screw key	1	55		
	Ball bearing	1	67		
	Ball bearing	2	68		
	Thrust ball bearing	2	69		
	Ball bearing	2	1502		
	Ball bearing	1	1503		

SERVICE KITS

Article code	Description	Quantity	Reference	Wear parts	Notes
314389.00	SERVICE KIT C B1500 N	1			◆
	Gear 26 teeth	1	6		
	Bronze seal (left)	1	11A		
	Bronze seal (right)	1	12A		
	Set of shims	2	14		
	Centrifugation disk	2	15		
	Spacer	2	18		
	Set of shims	1	22		
	Pump vane	6	25		
	Seal	2	28		
	Seal	1	30		
	Circlips	1	31		
	O'ring	1	32		
	Washer	8	33A		
	Capscrew CHC M6 X 35	8	34		
	Capscrew CHC M10 X 35	10	37		
	Seal	2	41		
	O'ring	1	42		
	Inlet shaft key	1	46		
	Screw key	2	47		
	Capscrew FHC/90 M8 X 15	6	49		
	Washer	10	52A		
	Sleeve	1	53	X	
	Female screw key	1	55		
	Lip seal	1	59	X	
	Circlips	1	63		
	Circlips	2	64		
	Ball bearing	1	67		
	Ball bearing	2	68		
	Thrust ball bearing	2	69		
	Wave spring	2	74		
	O'ring	1	84		
	Set of Compressor screws	1	145		
	SYNCHRONIZATION GEARS	1	189		
	Gear box	1	212		
	O'ring	2	443		
	O'ring	2	1200		
	Sleeve (RH)	1	1500	X	
	Sleeve (RH)	1	1500A	X	
	Lip seal	2	1501	X	
	Lip seal	2	1501A	X	
	Ball bearing	2	1502		
	Ball bearing	1	1503		
	Sleeve (LH)	1	1505	X	
	Sleeve (LH)	1	1505A	X	

(■) Recommended parts to have on stock

(◆) Sets of parts sold only in a kit or (▲) parts available to order.

Keep this parts lists with Installation, Operation and Maintenance Instructions.
To order the required spare parts, indicate the appropriate CUM numbers.



Z.I. la Plaine des Isles - 2 rue des Caillottes F-89000 AUXERRE - France
Tél : +33 (0)3 86 49 86 30 • Fax : +33 (0)3 86 49 87 17
contact@mouvex.com • www.mouvex.com